

# TRL05 LED TRACKLIGHT



### Product feature:

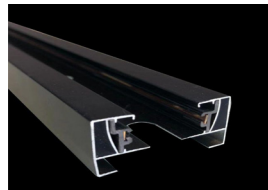
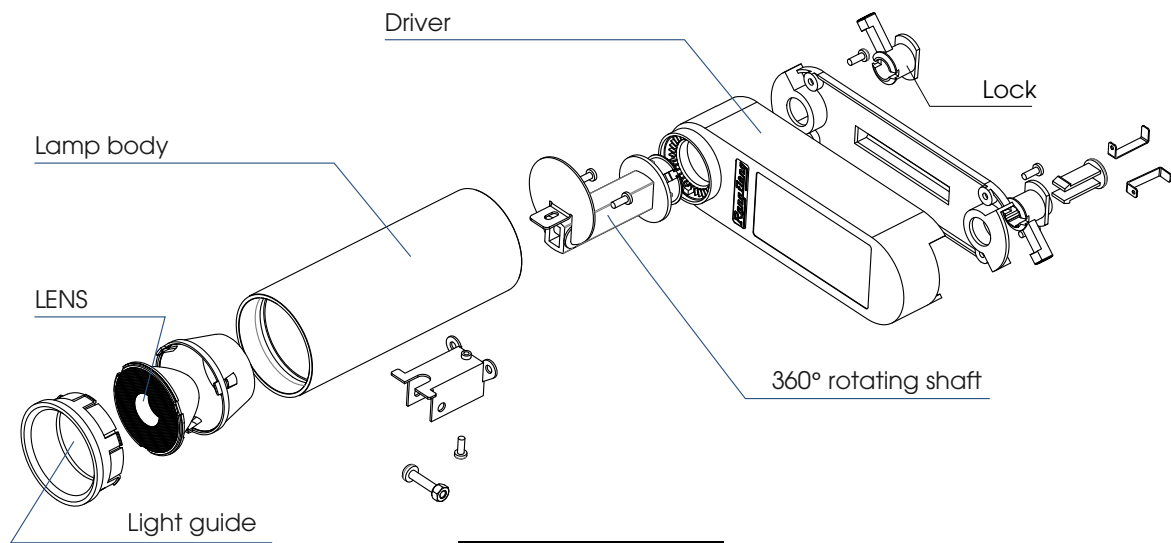
- High-quality LEDs provided by Samsung/ Seoul Semiconductor/ Nichia/ Lumiled with excellent performance
- High color rendering index up to 90 Ra
- High luminous efficacy up to 110 lm/W
- Die cast aluminum housing with perfect heat dissipation
- PC cover with high lighting transmittance and even lighting distribution
- 360 degrees horizontally and 90 degrees vertically rotating
- CE, KC certified
- Long lifespan: 25,000 hours, saving the maintenance cost

### \* Applications:

- Buildings, showrooms, restaurants, supermarkets, commercial centers, etc.



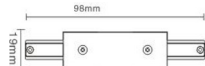
## PRODUCT DETAILS



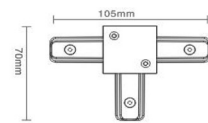
Track light rail connector



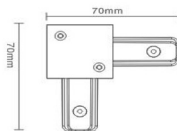
I type



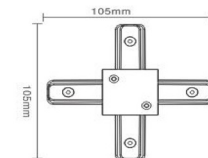
T type



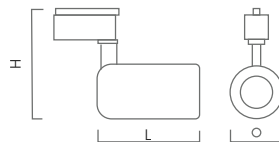
L type



X type



## PRODUCT SPECIFICATIONS

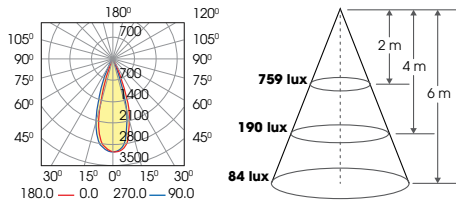


Model	Dimension ØxLxH (mm)	Power (W)	Voltage (V)	Power factor	Luminous flux (lm)	Luminous Efficacy (lm/W)	CCT (K)	CRI (Ra)	Beam angle (°)	Life span (hrs)
TRL05 10W	60x105x145	10	120/220÷240/100÷277	0.5	900/1000/1100	90/100/110	3000/4000/5000/5700/6500	80/90	24	25,000
TRL05 15W	60x105x145	15	120/220÷240/100÷277	0.5	1350/1500/1650	90/100/110	3000/4000/5000/5700/6500	80/90	24	25,000
TRL05 20W	50x160x210	20	120/220÷240/100÷277	0.5	1800/2000/2200	90/100/110	3000/4000/5000/5700/6500	80/90	24	25,000
TRL05 30W	60x160x145	30	120/220÷240/100÷277	0.5	2700/3000/3300	90/100/110	3000/4000/5000/5700/6500	80/90	24	25,000

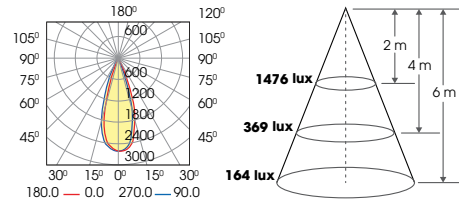
**Customizable:** Power (10W/15W/20W/30W), Voltage (120/220÷240/100÷277), PF, lm/W (up to 110), CCT (3000/4000/5000/5700/6500K), CRI (80/90), Driver (non isolation/ isolation), beam angle (15/24/36 degree) lifespan, etc.

## LUMINOUS INTENSITY DISTRIBUTION

TRL05 10W



TRL05 20W



## PACKING AND TRANSPORTATION



Type of lamps	Quantity in master box (pcs)	Estimated quantity / 20'DC (pcs)	Estimated quantity / 40'HC (pcs)
TRL05 10W/15W	24	36 144	83 016
TRL05 20W	12	18 732	43 020
TRL05 30W	12	14 796	33 984

Customizable according to customer's request



Exported market: South Korea, EU, etc



**RANG DONG LIGHT SOURCE AND VACUUM FLASK JOINT STOCK COMPANY**

Add: 87- 89 Ha Dinh Street, Thanh Xuan, Hanoi, Vietnam

Tel: (84-24) 3 858 4310 / 3 858 4165

Fax: (84-24) 3 858 5038

Email: export@rangdong.com.vn



Specifications are subject to change without prior notice